



4X4 ENGINEERING

SOSVDJ70

TOYOTA LANDCRUISER 70 SERIES 1VD-FTV 2016 – 2024 ON



CONTENTS

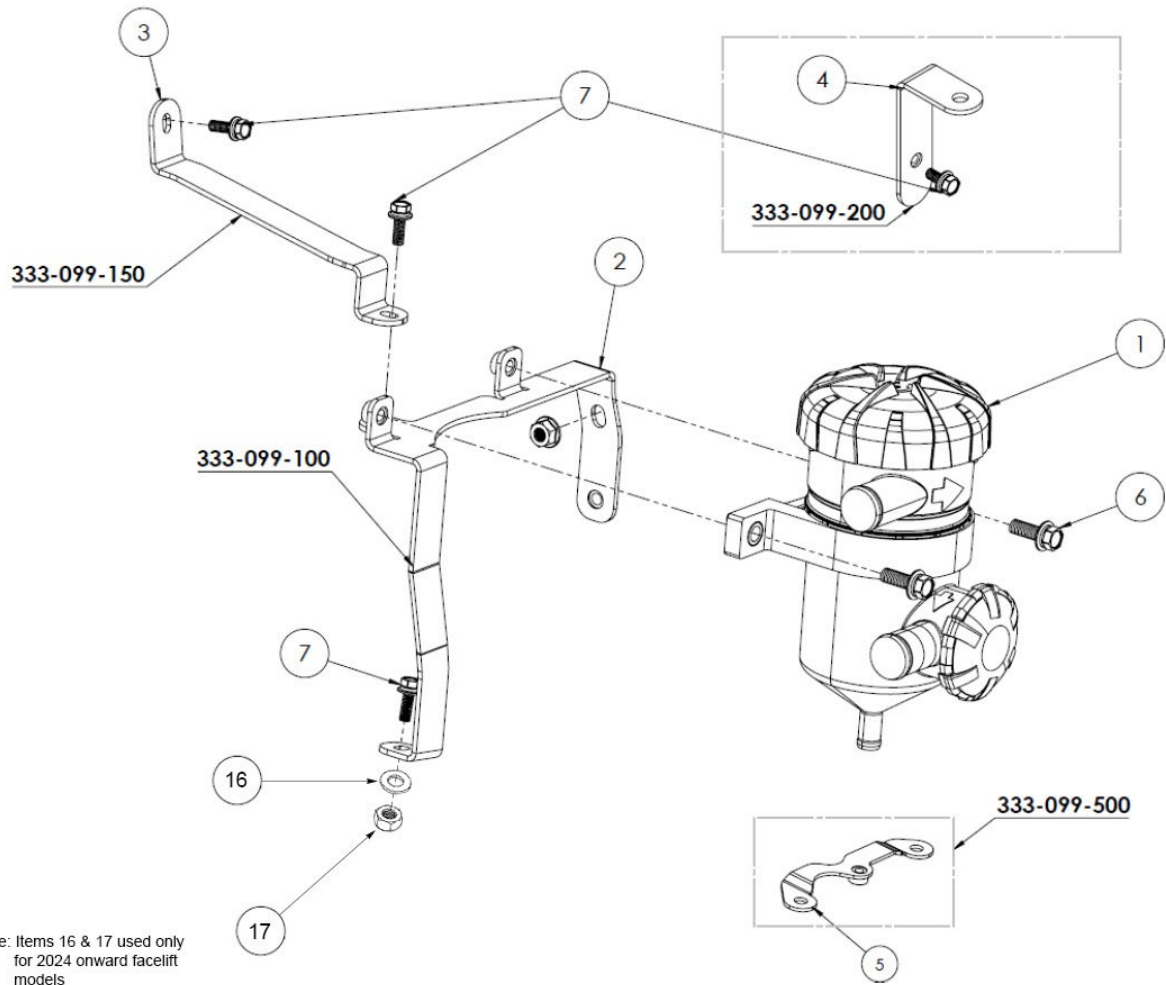
- **PAGE 3** - MOUNTING THE OIL TO AIR SEPARATOR
- **PAGE 7** - MOUNTING THE OIL TO AIR SEPARATOR WITH AN ARMAX ECU KIT
- **PAGE 9** - HOSE ROUTING AND CONNECTIONS

Parts List

ITEM	PART NO	DESCRIPTION	QTY
1	000-098-100	OIL TO AIR SEPARATOR	1
2	333-099-100	BRACKET-STEEL-OIL SEPARATOR-MAIN	1
3	333-099-150	BRACKET-STEEL-OIL SEPARATOR-SUPPORT	1
4	333-099-200	BRACKET-STEEL-OIL SEPARATOR- DRAIN HOSE	1
5	333-099-500	BRACKET-STEEL-DIPSTICK RELOCATION	1
6	000-1013-400	BOLT - HEX - M8 X 1.25 X 25MM SS SEMS	2
7	000-001-600	BOLT - HEX - M6 X 1.0 X 15MM SS SEMS	4
8	000-255-400	NUT-M8 FLANGE SS	2
9	000-911-035	CLAMP - SPRING - 35 X 12MM	2
10	000-911-025	CLAMP - SPRING - 25 X 12MM	3
11	000-911-019	CLAMP - SPRING - 19 X 12MM	1
12	000-995	CLAMP - HOSE SUPPORT - 20/15MM	1
13	000-987-290	CABLE TIE - PLASTIC - 280MM	15
14	333-994-500	HOSE ASSY-OIL TO AIR	1
15	000-969-500	VALVE - DRAIN - OIL SEPARATOR	1
16	000-353	WASHER – BODY – 6MM X 1.5 X 18MM	1
17	000-204	NUT – NYLOC – 6MM X 1.0 – S/S	1

STAND ALONE OIL TO AIR SEPARATOR

1



2

Remove the dipstick retaining bolts.

Install the dipstick relocation bracket (Item 5) using the OE bolts.

Install dipstick to the relocation bracket using OE bolt.

Dipstick Relocation Bracket



3

Remove and retain the left hand side nut from the master cylinder.

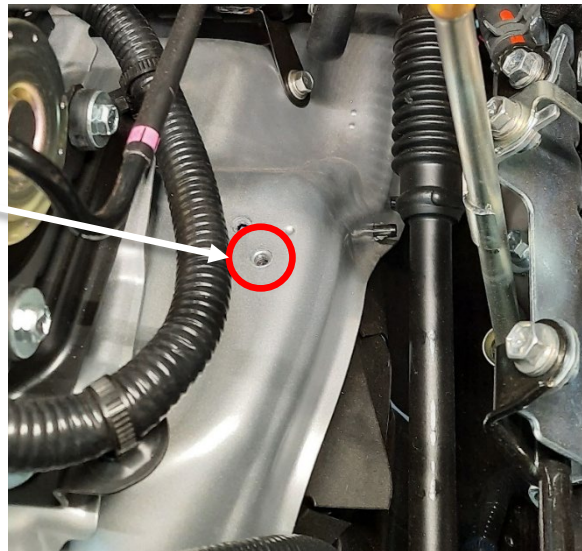
Remove nut



4

Install the main oil separator bracket (item 2) to the vehicle. Secure to the master cylinder using retained nut and to the inner guard using a M6x15mm bolt (item 7).

Inner guard bolt hole



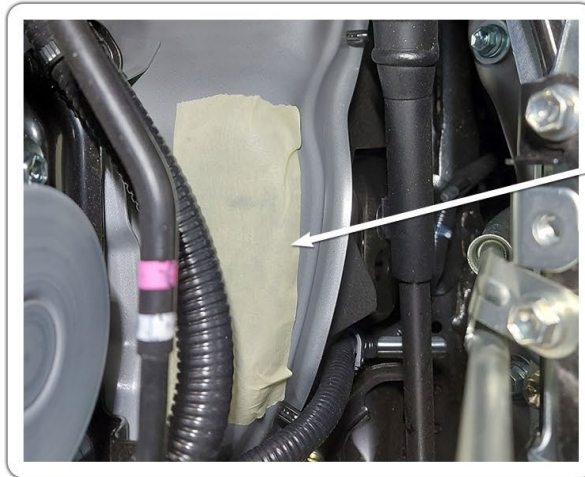
Master Cylinder nut

Main Bracket (item 2)

M6x15mm Bolt

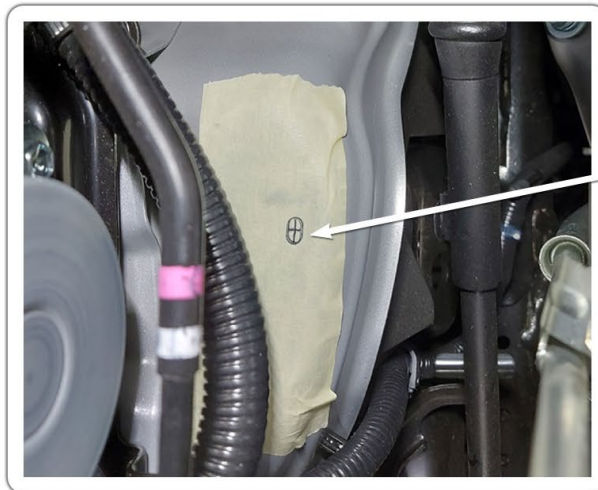
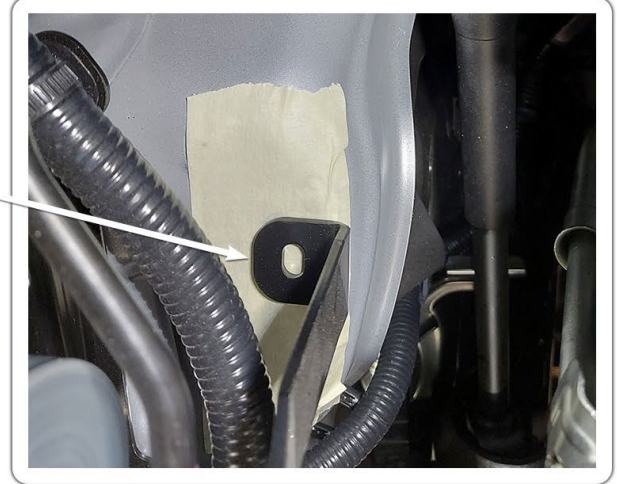


The following steps apply to 2024 facelift models with no thread provided in the inner wheel arch from factory.



1. Apply tape to inner guard where main oil separator bracket (item 2) locates.

2. Temporarily install main oil separator bracket (item 2) in position and mark bolt hole on the tape.

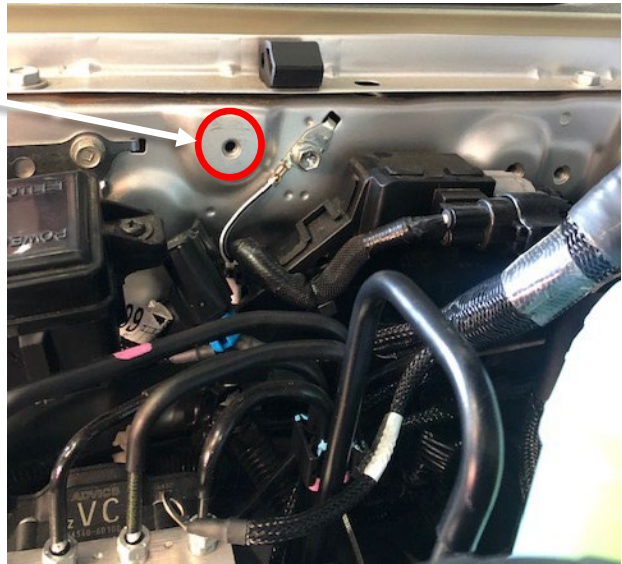


3. Remove bracket, mark centre of bolt hole and drill hole to 6mm.

Reinstall main oil separator bracket (item 2) and secure to guard using M6x15mm bolt (item 7), 6x18mm body washer (item 16) and M6x1.0 nyloc nut (item 17).

Secure the washer and nut from the underside.

Inner guard bolt hole



Install the oil separator support bracket (item 3) to the vehicle. Secure to both the inner guard and mounting bracket A using M6x15mm bolts (item 7).

M6x15mm bolts



Support Bracket
(item 3)

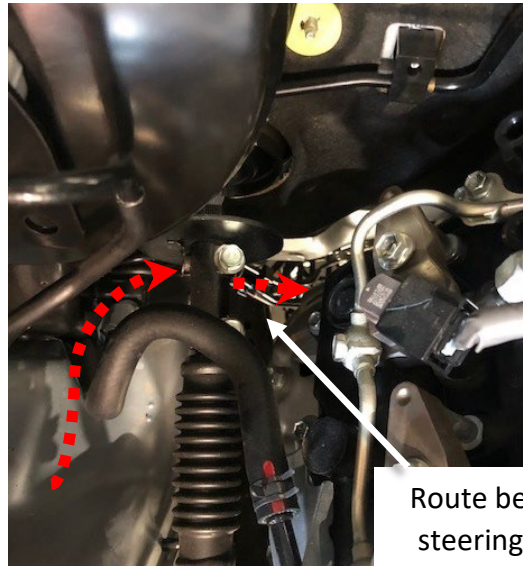
Connect the drain hose to the drain outlet on the oil to air separator. Secure with 18mm spring clamp (item 11).



Drain Hose

7

Install the oil to air separator to the vehicle, routing the drain hose as shown around the vacuum hose and beneath the steering shaft.



Route beneath steering shaft

8

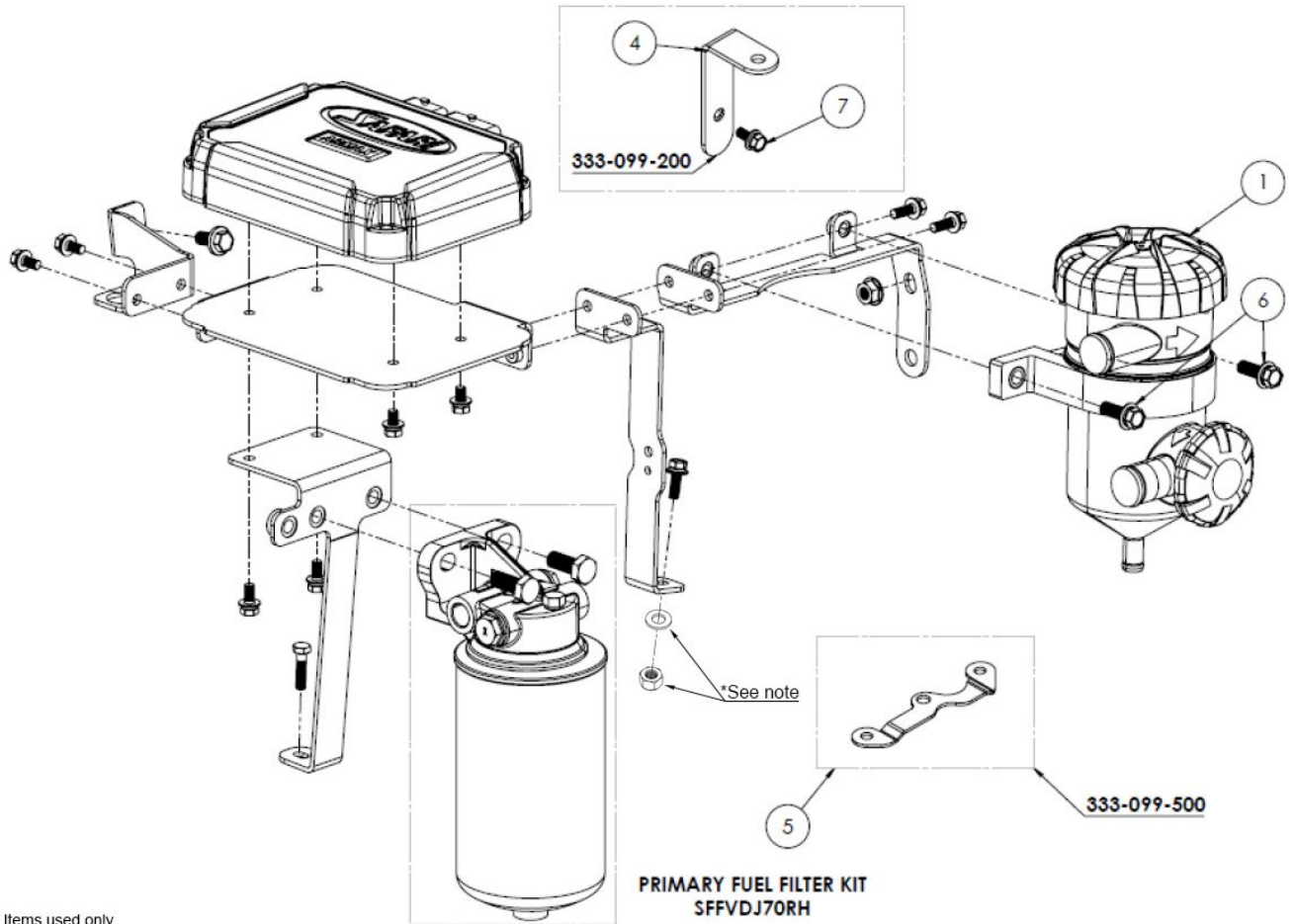
Install the oil to air separator (item 1) to the main mounting bracket (item 2) using 2 x M8x25mm bolts (item 6).



Skip to Hose Routing and Connections section on page 9

OIL TO AIR SEPARATOR WITH ECU BRACKETRY

1



2

Remove the dipstick retaining bolts.

Install the dipstick relocation bracket (Item 5) using the OE bolts.

Install dipstick to the relocation bracket using the OE bolts.

Dipstick Relocation Bracket



3

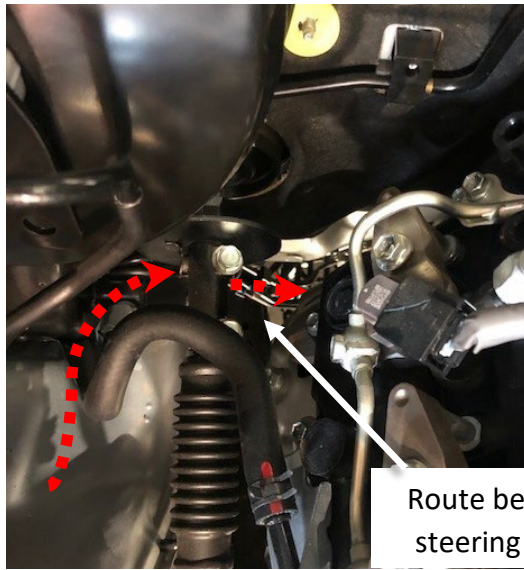
Connect the drain hose to the drain outlet on the oil to air separator. Secure with 18mm spring clamp (item 11).



Drain Hose

4

Install the oil to air separator to the vehicle, routing the drain hose as shown around the vacuum hose and beneath the steering shaft.



Route beneath steering shaft

5

Install the oil to air separator (item 1) to the main mounting bracket (item 2) using 2 x M8x25mm bolts (item 6).

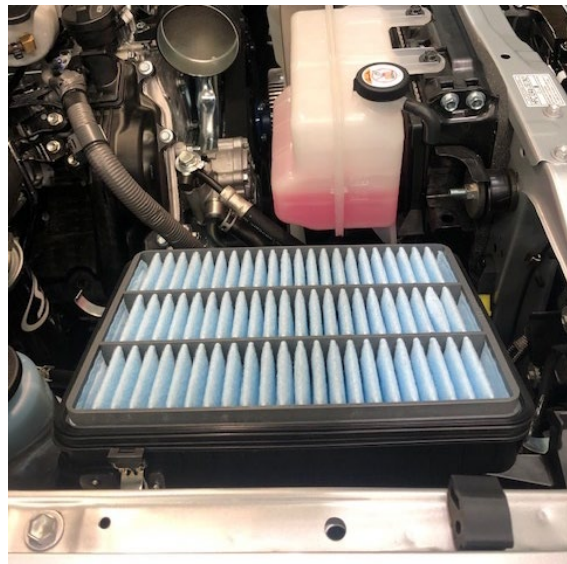


NOTE: For vehicles equipped with a double diaphragm brake booster or a Hydro brake Booster, secure Oil to Air Separator to the mounting brackets using the supplied M8 nuts (item 8).

HOSE ROUTING AND CONNECTIONS

1

Remove the air box lid and air inlet hose.



2

Remove the OE crankcase breather hose.

Remove



3

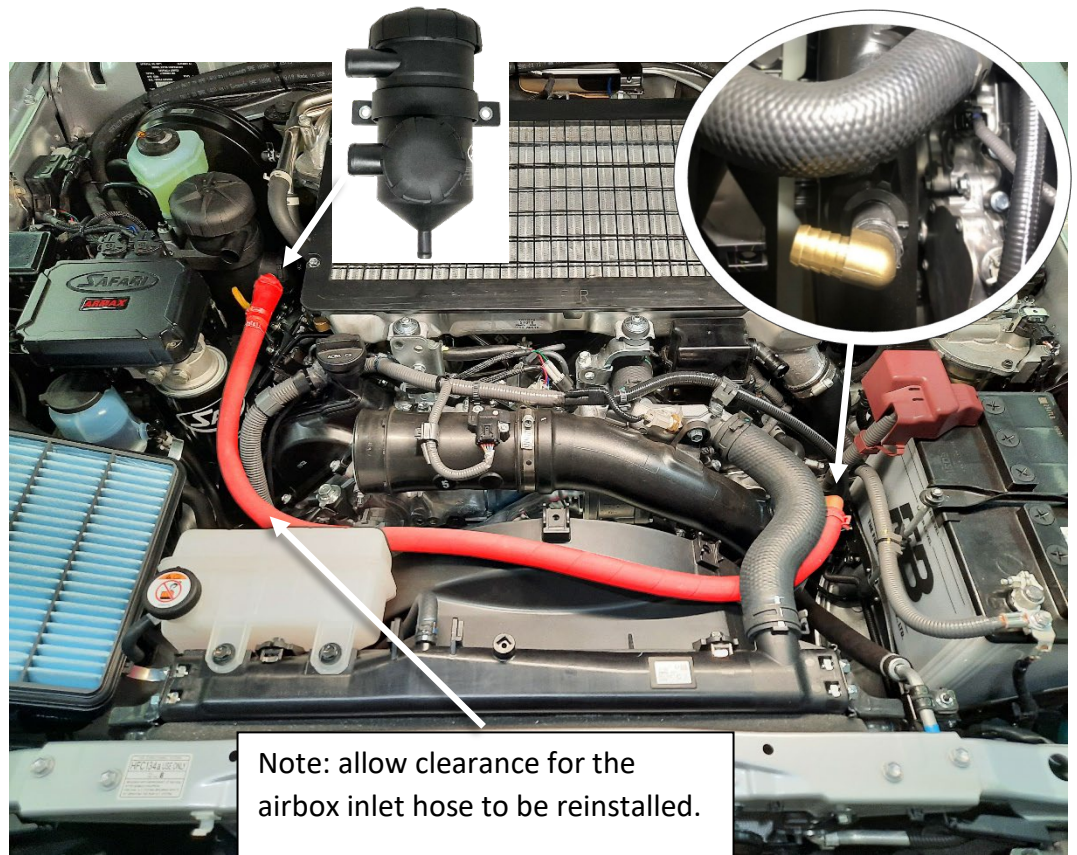
Install the short hose with the 90-degree right angle brass fitting to the air inlet duct. Secure hose to air inlet duct using 25mm spring clamp (item 10).



4 Connect the shorter of the 2 hoses to the oil to air separator outlet (lower). Secure with 35mm spring clamp (item 9).

Route lower hose (red) as shown to the air inlet duct.

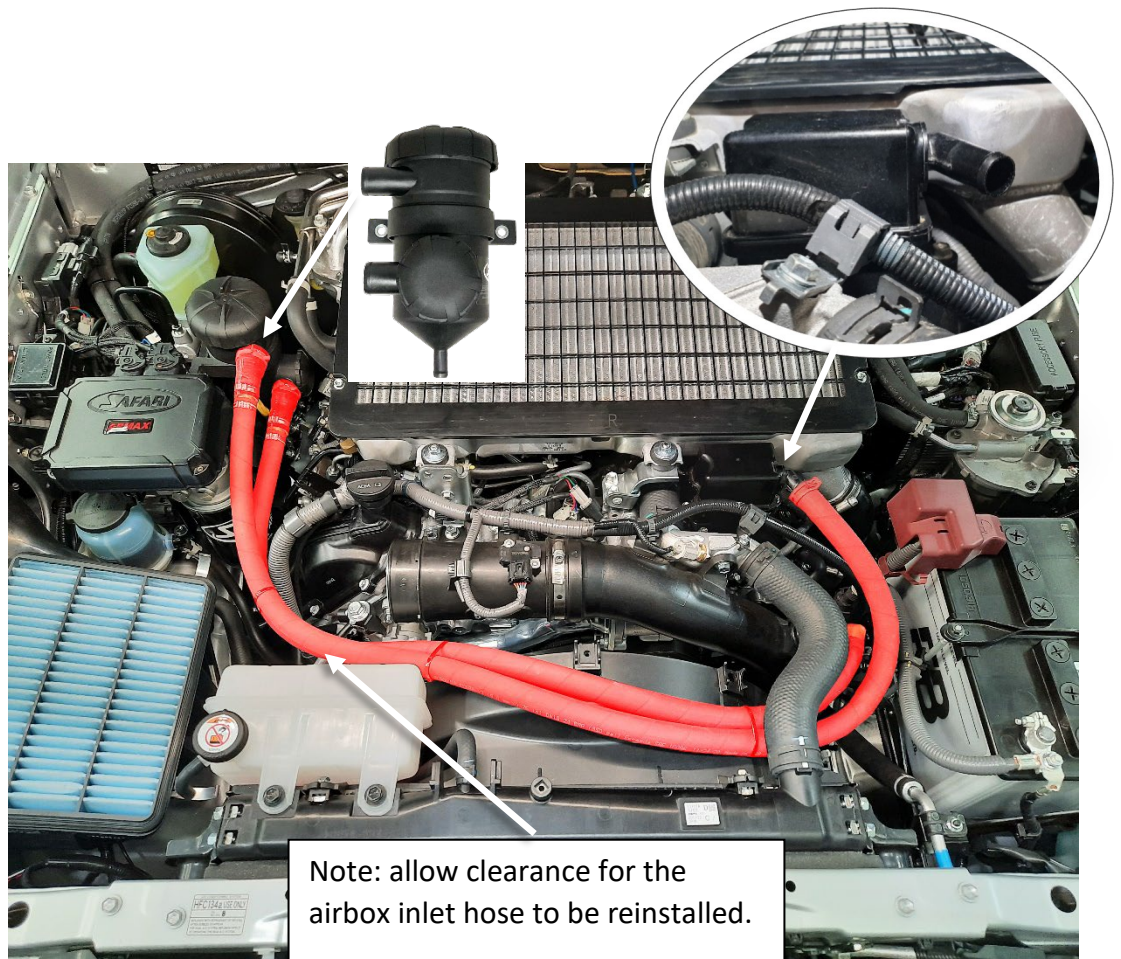
Trim to length and connect to right angle fitting using a 25mm spring clamp (item 10) to secure.



5 Connect the longer of the 2 hoses to the oil to air separator inlet (upper). Secure with 35mm spring clamp (item 11).

Route upper hose (red) as shown to the crankcase breather.

Trim to length and connect using 25mm spring clamp (item 10) to secure.

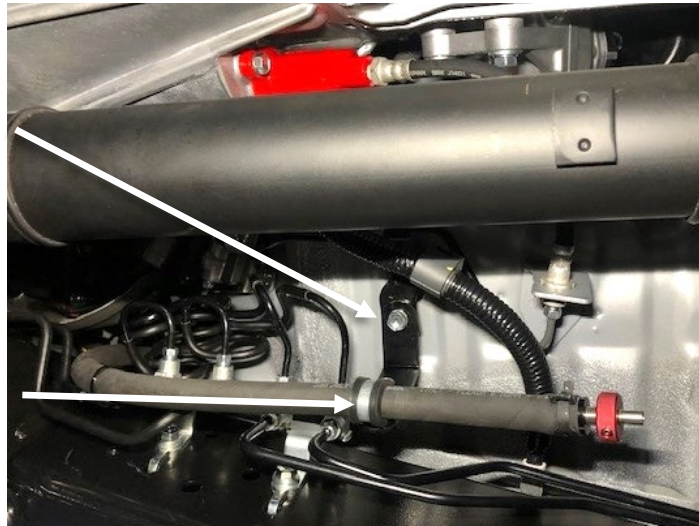


6 Install drain hose mounting bracket (item 4) to the earth cable support bracket using the OE bolt.

Install P-Clamp (item 12) to drain hose and secure to drain hose bracket using M6x15mm bolt (item 7).

Drain hose bracket

P-Clamp



7 Cable tie the drain hose to the brake lines and ensure that it is clear of the exhaust and the steering column.

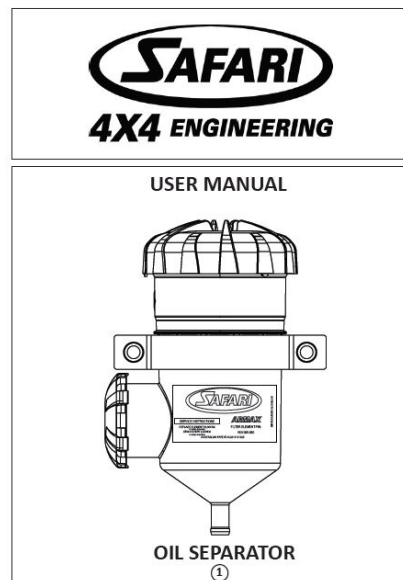
Cable tie

Drain valve hose



8

PLACE USER MANUAL ON PASSENGER SEAT OF VEHICLE OR GIVE DIRECTLY TO THE VEHICLE OWNER.



Copyright Safari 4x4 Engineering Pty Ltd Melbourne Victoria Australia – www.safari4x4.com.au