



## SAFARI V-SPEC SNORKEL

**SS120HF**

**24/11/09**

ITEM	DESCRIPTION	QTY	PART NO
1	BODY – SNORKEL	1	320-133-000
2	3 ½" AIR RAM ASSEMBLY	1	000-135-800
3	BRACKET - UPPER MOUNTING	1	320-032-000
4	BOLT - HEX 6.0mm x 1.0 x 14mm (SEMS)	2	000-002-100
5	SCREW – S/T 4.2mm x 16mm	3	000-951-300
6	BODY CLIP – PLASTIC	3	000-960
7	HOSE – AIR ENTRY	1	320-024-200
7a	CLAMP - HOSE 70/90mm	1	000-908
7b	CLAMP - HOSE 90/110mm	1	000-910
8	STUD - S/S 8mm x 1.25 x 25mm - O/L	6	000-110
9	WASHER - BODY 8mm x 30mm	6	000-311-300
10	NUT - NYLOC 8mm x 1.25mm	6	000-205-300
11	TEMPLATE	1	320-017-000
12	HOSE CLAMP - SIZE 56 (BLACK)	1	000-914/B
13	SLEEVE – AIR RAM	1	000-441-200



## SAFARI V-SPEC SNORKEL

# SS120HF

---

**To Suit: TOYOTA HILUX (KUN26R Series)  
3.0L Turbo Diesel D4D (1KD-FTV Engine)  
Built: 03/2005 – 07/2011**

---

**Fitment to:** Right hand side  
**Fitting time:** Approximately 120 minutes  
**Special Tools:** 108mm Holesaw  
Step Drill  
Touch-up Paint

---

**Prior to commencing the installation, it is the installer's responsibility to verify that all components and particularly the template (Item 11) are correct.**

---

### **Instructions:**

1. Remove : Air cleaner assembly.  
: Right hand front wheel arch liner.  
: Air intake duct.
2. Tape the template to the upper and rear edges of the right hand guard, i.e. edges adjacent to the bonnet and door respectively. Using a felt tip pen, mark all hole positions. Remove template.
3. Drill a pilot hole for each marked hole position. Using the step drill, drill the six mounting hole positions to 16mm. Using the 108mm holesaw, drill the main hole. De-burr and paint all holes.

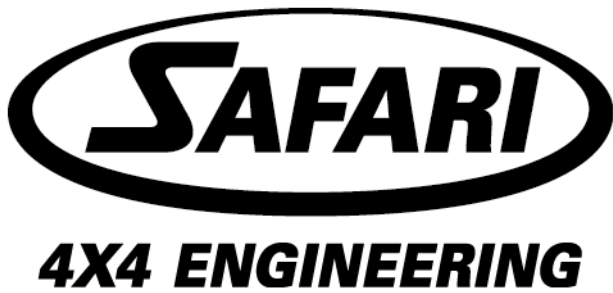
## **NEW ZEALAND INSTALLATIONS ONLY :**

Safari have developed 2 methods of Snorkel A pillar attachment, for the conventional method please proceed with the current document alternatively please see the link below for further instructions.

[www.safari4x4.co.nz/apillarmounting](http://www.safari4x4.co.nz/apillarmounting)

4. Screw the six mounting studs into the snorkel body inserts, then fasten the upper mounting bracket to the snorkel body using necessary hardware. Carefully position the snorkel body onto the guard. With the snorkel body positioned on the guard, check there is adequate clearance between the upper mounting bracket fastening bolts and the door frame, whilst opening the door. Once confirmed, mark the 3 hole positions of the upper mounting bracket on the 'A' pillar and remove the snorkel body from the vehicle.
5. Drill the 3 marked hole positions to 8mm. N.B.. Pay close attention when drilling the three hole positions, to ensure that the aerial cable is not damaged by drilling too deep into the 'A' pillar cavity. De-burr and paint holes.
6. Insert the plastic body clips into the 'A' pillar, then fasten the upper mounting bracket to the 'A' pillar using necessary hardware.
7. Remove the foam tape from the air cleaner housing inlet snout. Loosely install the 70/90mm hose clamp (Item 7a) over the air cleaner housing inlet snout. Re-install the air cleaner housing into position and secure with genuine fasteners.
8. Loosely install the 90/110mm hose clamp (Item 7b) onto the air entry hose. Install the air entry hose onto the air cleaner housing inlet snout, rotating the hose into position to ensure it lines up with the main hole in the guard panel (Do not apply any form of lubricant to the inside of the rubber hose or to the snout).
9. Install the snorkel body (Item 1) onto the guard, guiding the snorkel body snout into the air entry hose. With the snorkel body correctly positioned, fasten to the guard using necessary hardware. Fasten the upper mounting bracket (Item 3) to the snorkel body (Item 1) using necessary hardware.
10. Orientate the air entry hose to achieve the best alignment between the snorkel body snout and air cleaner housing inlet. Ensure that the air entry hose is hard up against the shoulder of the snorkel body. Tighten the 90/110mm and the 70/90mm hose clamps at either end to secure the hose.
11. Re-install the air cleaner element, lid etc. Re-install the wheel arch liner.
12. Install the air ram sleeve (item 13) to the snorkel body inlet (refer to the attached air ram sleeve installation guide).
13. Install the air ram assembly to the snorkel body and fasten the hose clamp (Item 12).

**NB: It is the installer's responsibility to ensure all connections are water tight.**



This Genuine Safari Snorkel System contains a newly designed Safari Air Ram.

Prior to installing the air ram, a special air ram sleeve may need to be installed over the end of the snorkel. This operation is best performed just prior to installing the snorkel body to the vehicle.

## Air Ram Sleeve Installation Guide

1

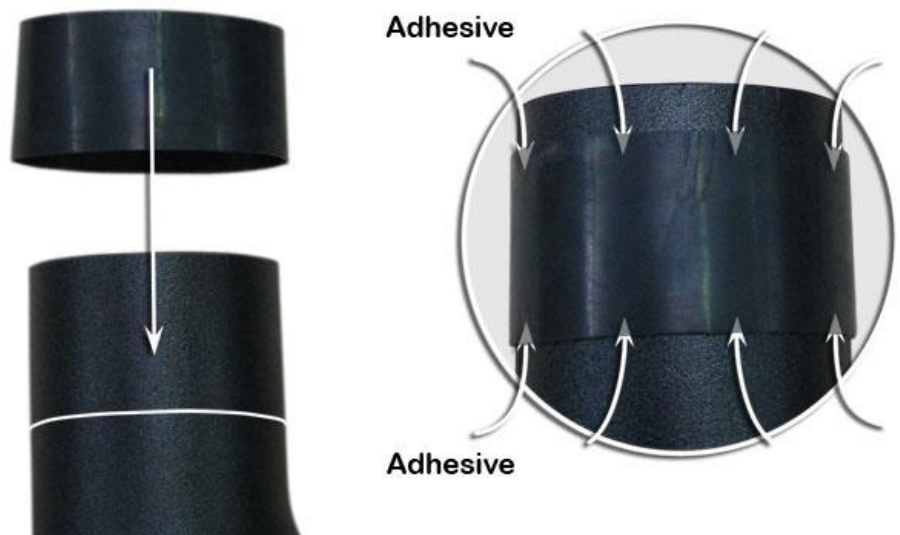
Measure 65mm down from the top of the snorkel and mark around the entire circumference.



2 Slide the air ram sleeve over the top of the snorkel.

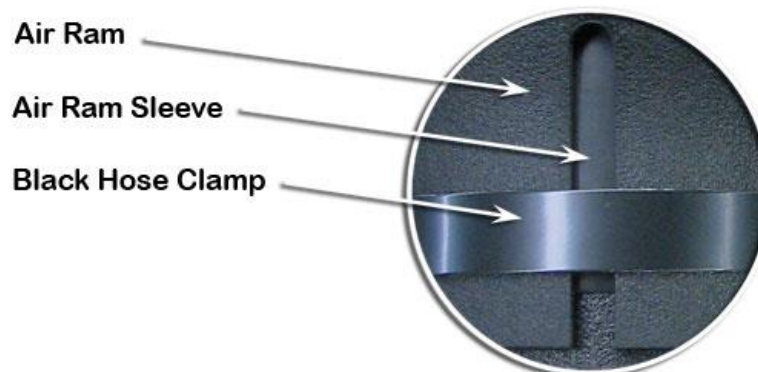
Align the bottom of the air ram sleeve with the previously marked 65mm line.

When correctly aligned, lift the edges of the hose ends slightly and apply several small dabs of Loctite 406 Instant Adhesive or similar to secure the sleeve into position.



3

Install the air ram in accordance with the enclosed snorkel installation instructions for your snorkel model.



# SAFARI

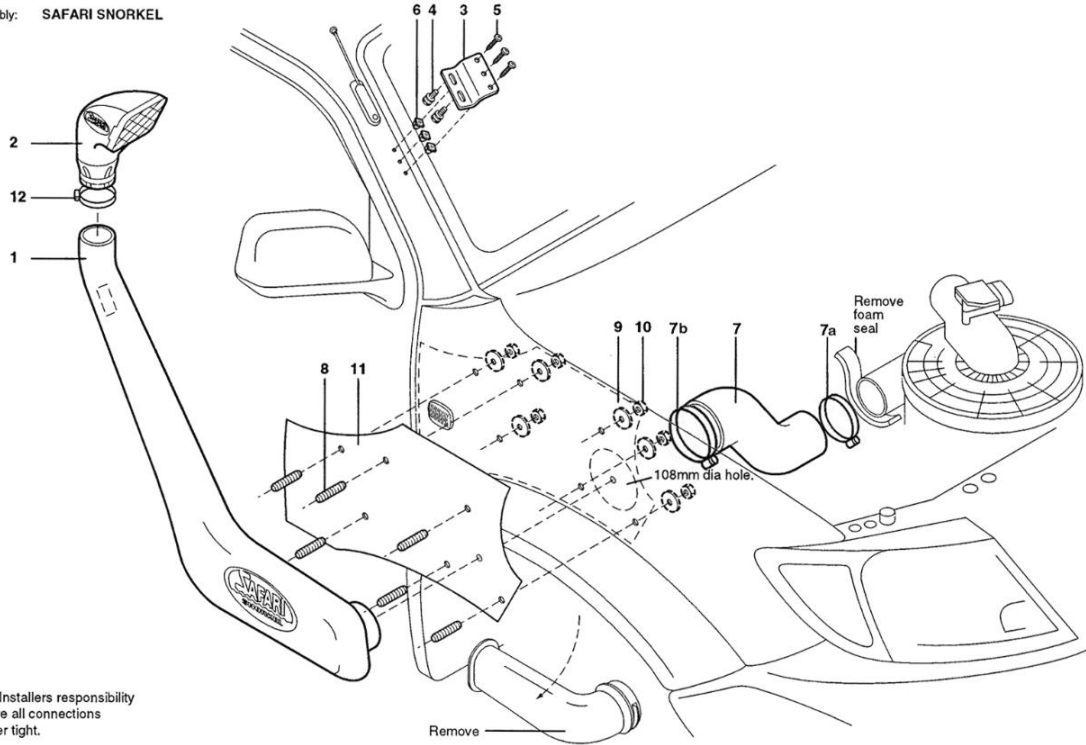
## 4X4 ENGINEERING

Model No: **SS120HF**

29/05/08

Description: **TOYOTA HILUX 2005 MOD. 3.0L D4D TDI (1KD-FTV Engine)**

Sub Assembly: **SAFARI SNORKEL**



**NOTE:**  
It is the Installer's responsibility to ensure all connections are water tight.